

Outdoor LED Totem Advertising Machine:P3.91



1. Product introduction

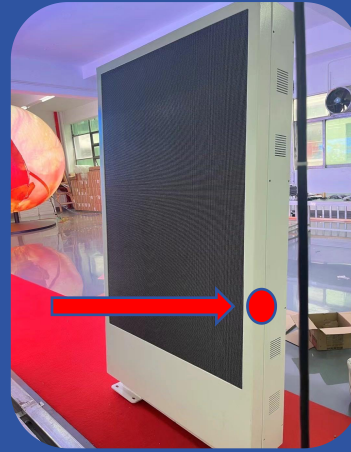
Outdoor LED advertising machines are mainly used in outdoor scenes such as hotels, stations, transportation hubs, and road signs, and are used for multi-functional applications such as advertising, sign guidance, and information transmission.



2. Appearance and details display



Double Display



Open Side door maintenance



Power Supply and Control system



Timing Control Switch

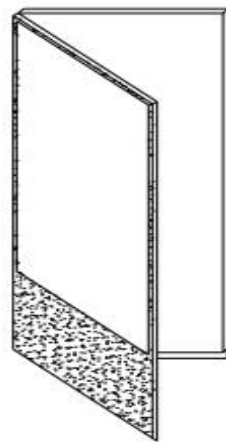
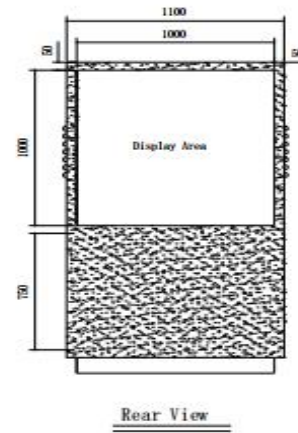
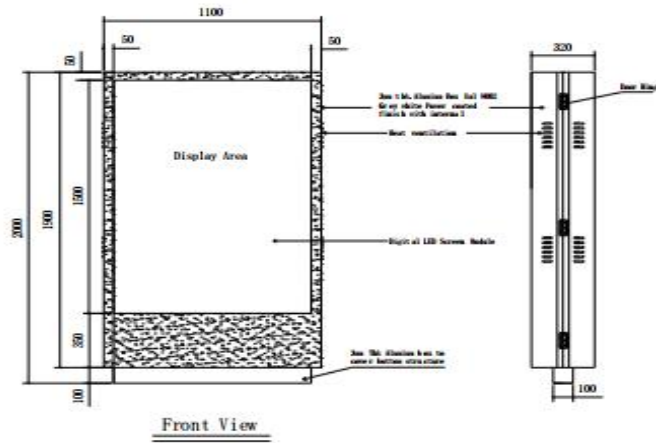


Electrical connection diagram

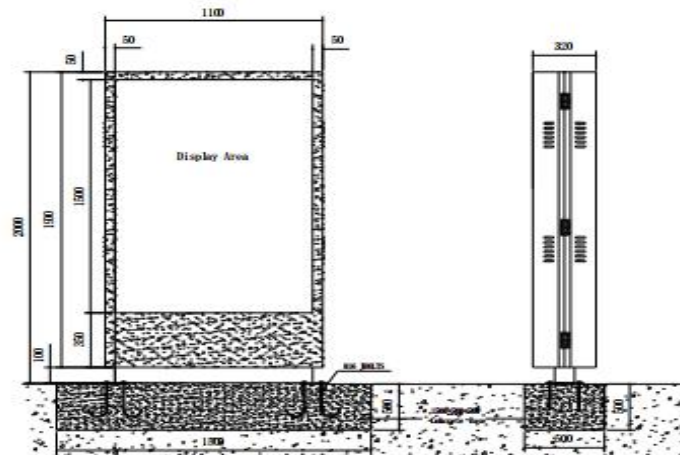


Product packaging picture

3. Dimensional design drawings



Maintenance Method



4. Product parameters

Product Name		P3.91
Technical Parameters		
No.	LED constitution	Types
1	Pixel Pitch	3.91mm
2	Encapsulation Specification	SMD2121
3	Standard driver IC	PWM
4	Module Size	250mm × 250mm
5	Color Configuration	1R1G1B(Full Color)
6	Module Resolution	64 dots × 64 dots
7	Pixel Density	65536 dots/m2
8	Driver Mode	1/16 scan
9	Refresh rate	3840 Hz
10	Frame rate	60HZ
11	Gray scale(Bit)	16Bit
12	Controlling system	Novastar
13	Material	Aluminum 6063
14	Cabinet flatness (mm)	≤0.1mm
15	Installation/maintenance method	Clamshell
16	Cabinet Weight	178kg
17	Degree of protection	IP65
Optical properties		
1	Brightness(cd/ m ²)	5500cd/ m ²
2	Color temperature	3200-10200K Adjustable
3	View Angle	Horizontal 140° Vertical 140°
4	Contrast	5000: 1
Electrical parameters		
1	Module supply voltage	DC: 4.2V-5 V
2	Module maximum current	4.8A
3	Maximum power consumption	24W / module/ pcs
4	Working input voltage AC (V)	AC90-264V(47-63Hz)
5	Peak power consumption	1200W/m2
6	Average power consumption	340 W/m2

Use parameters		
1	Life typical value (hrs)	100000 h
2	Working temperature range	-25 --- +75 (°C)
3	Working Humidity Range (RH)	10%—90%RH
Overall machine parameters		
1	Overall dimensions (W*H*T)	2000mm*1100mm*320mm
2	Display size(W*H)	Front:1000mm*1500mm
		Rear:1000mm*1100mm
3	Display resolution(W*H)	Front:256mm*384mm
		Rear:256mm*256mm
4	Control mode	USB Flash Drive
5	Function integration	Light sensor + remote power off + synchronization module
6	Cooling system	Intelligent temperature control and heat dissipation + dust-proof filtration

5. System Connection Draws



Computer/Laptop



Pen-Drive/USB



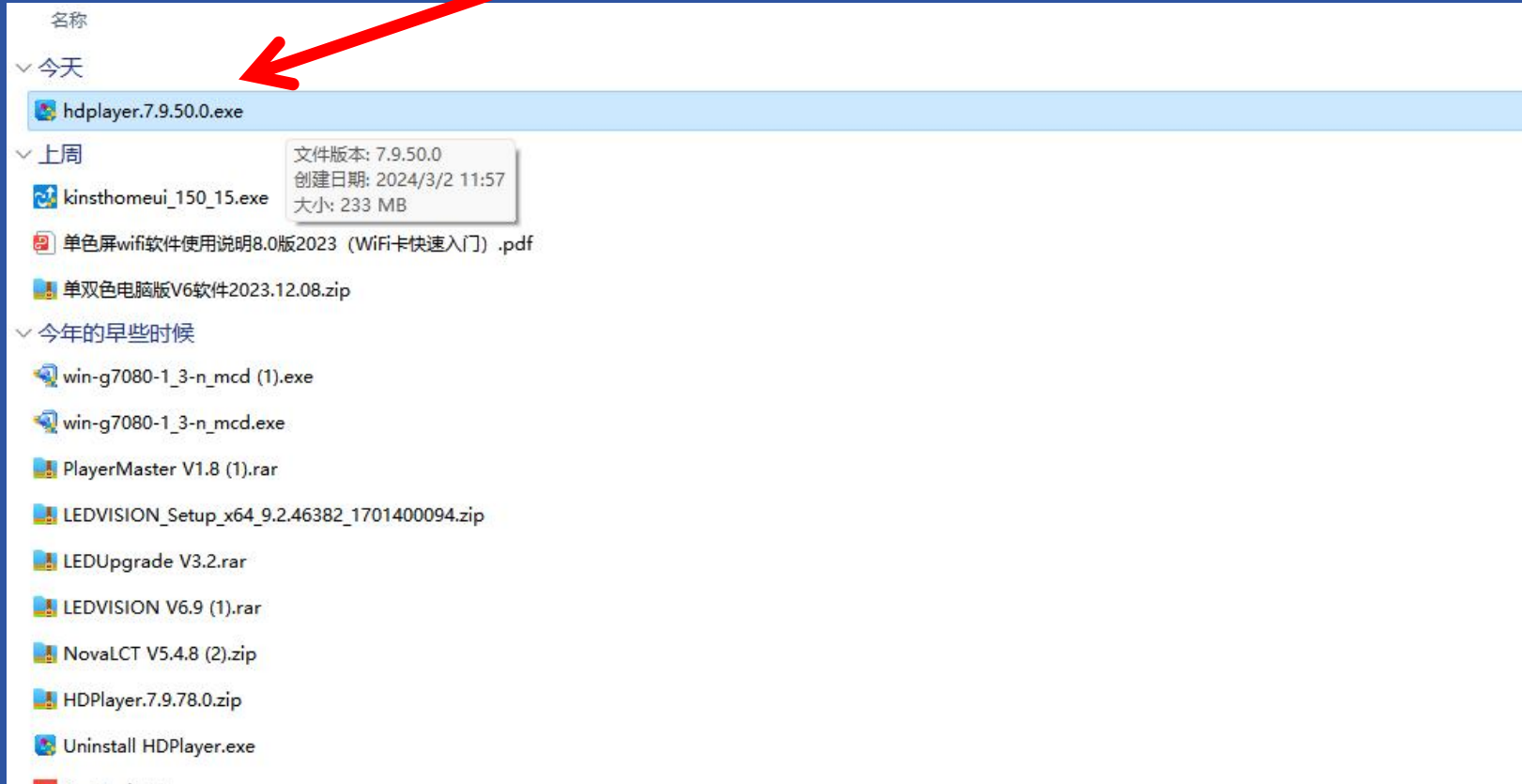
USB extension cable



LED Totem

6. How to use software to edit and change programs

6.1 Software Download

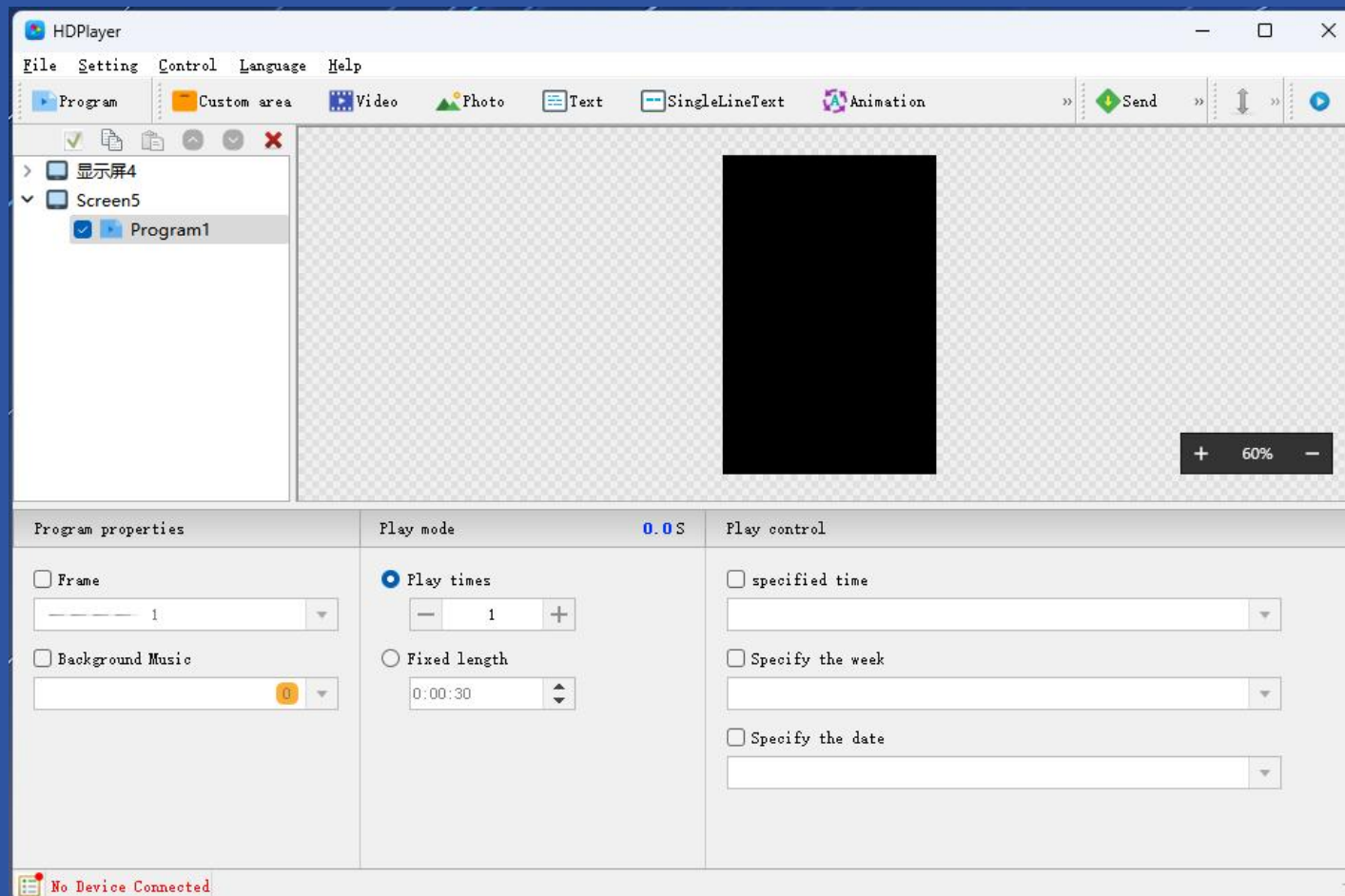


6.2 After the software installation is completed



Homescreen icon

6.3 Open the software



6.4 Software setup steps

6.4.1: Select the model of the control device

6.4.2: Set the resolution of the corresponding display surface

6.4.2: Set the playback window to full screen

6.4.3: Select the types of videos, pictures and text you want to add

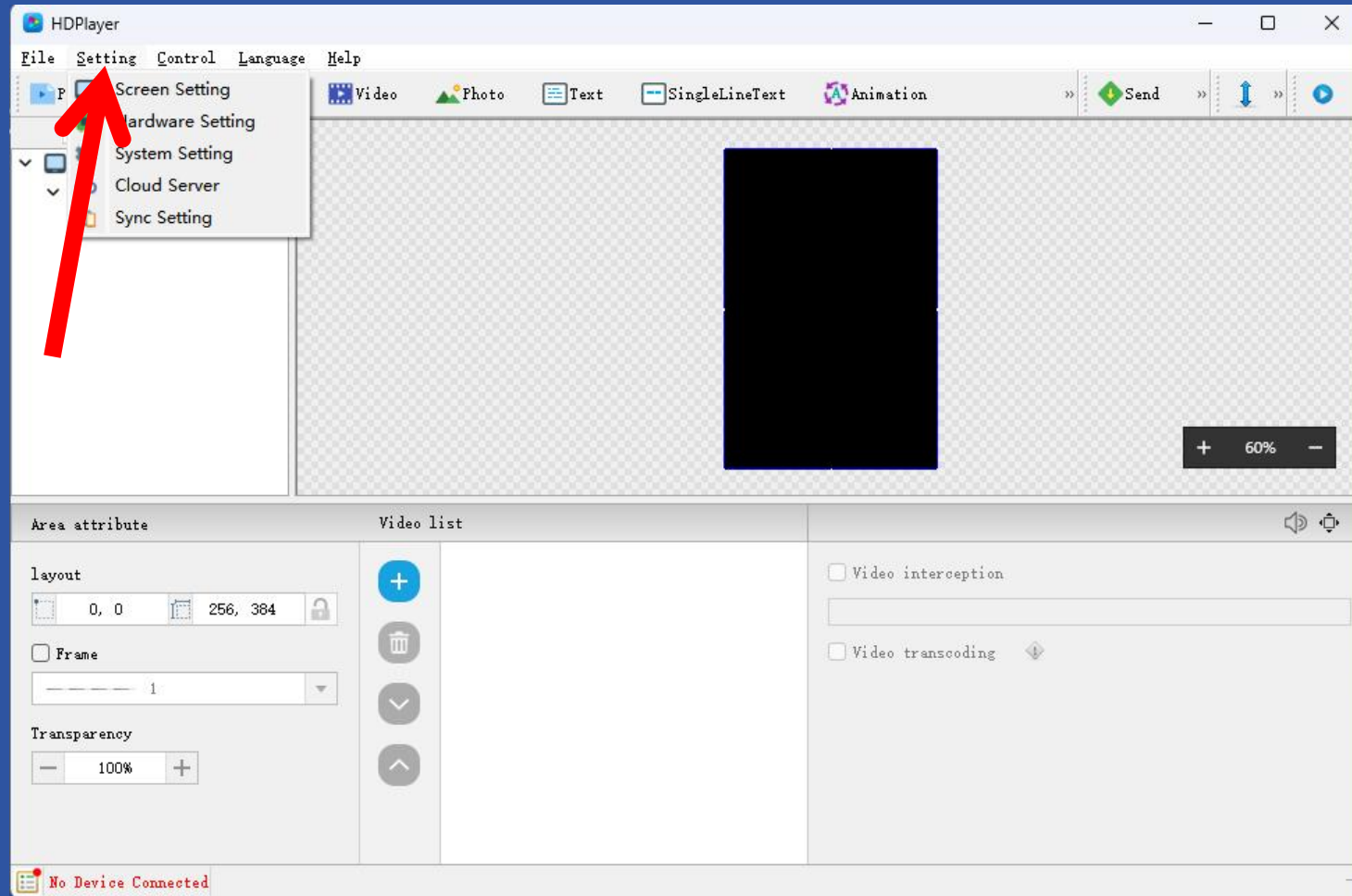
6.4.4: Import video

6.4.5: Send program to PEN flash drive/U-disk

6.4.6: After the program is uploaded, you can unplug the USB flash drive

6.4.1: Select the model of the control device

Click: "Setting"



6.4.2: Select the model of the control device

Select: "Cseries"



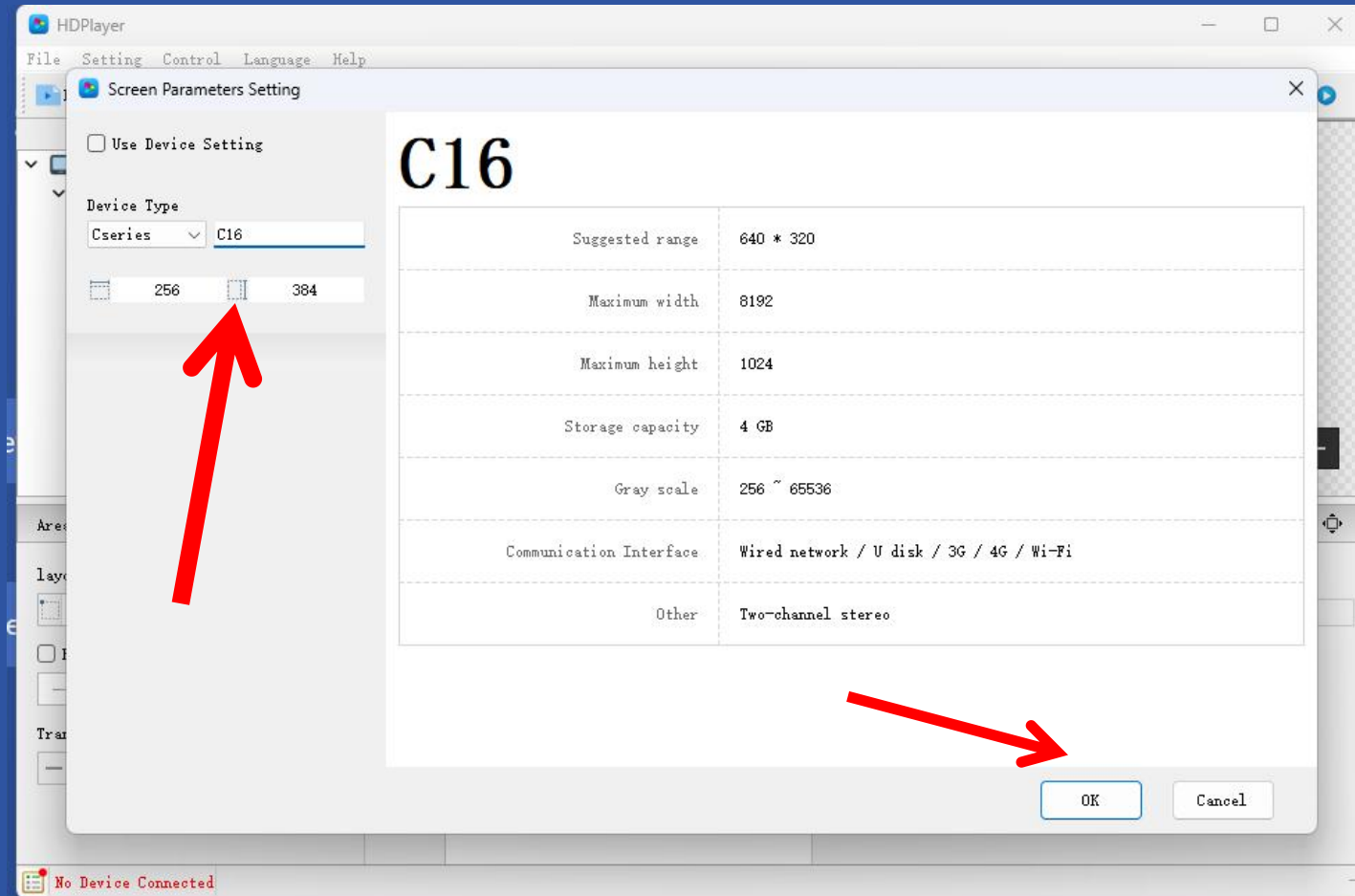
Select: "C16"



The resolution is set to
256*384

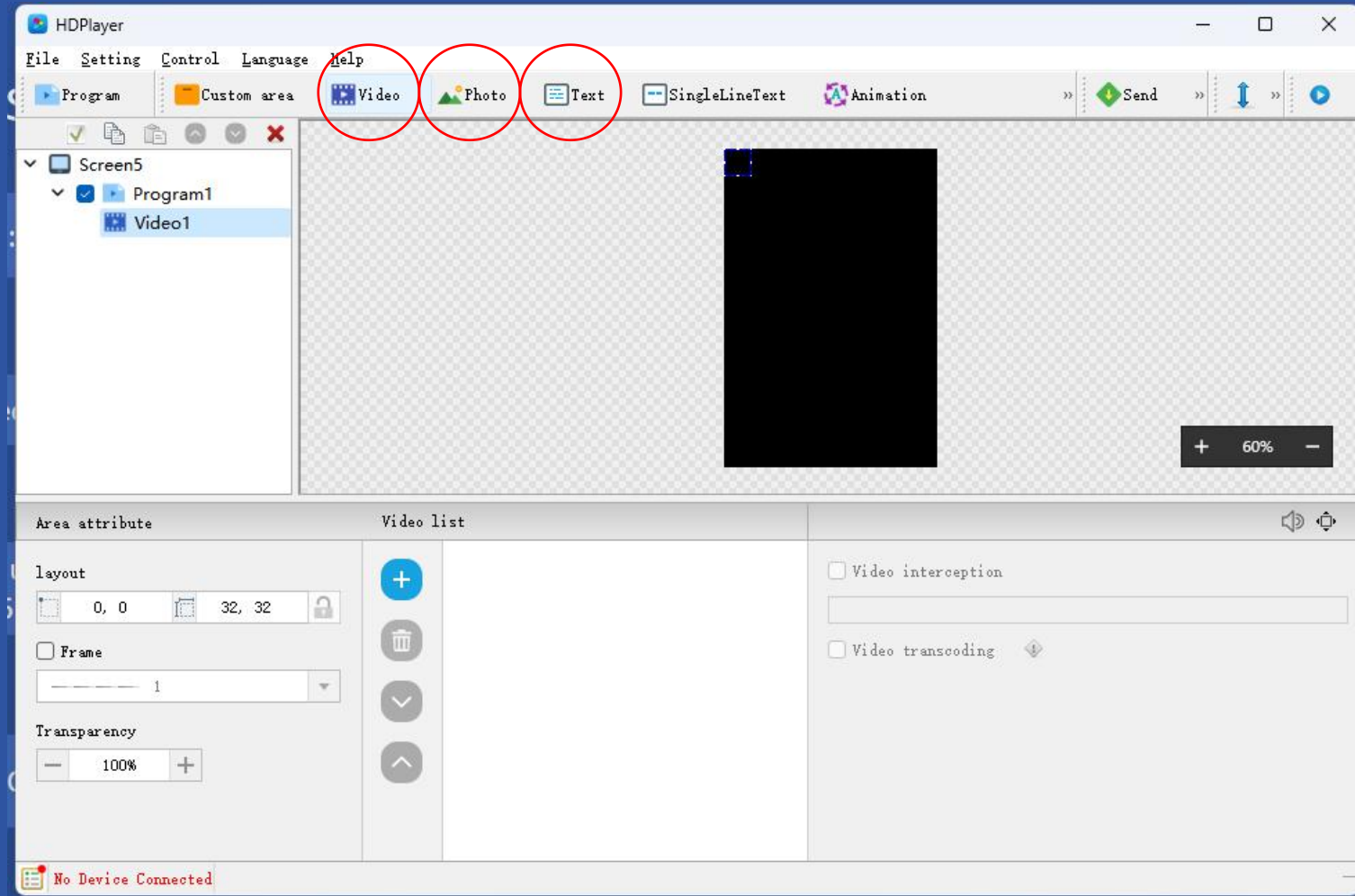


OK



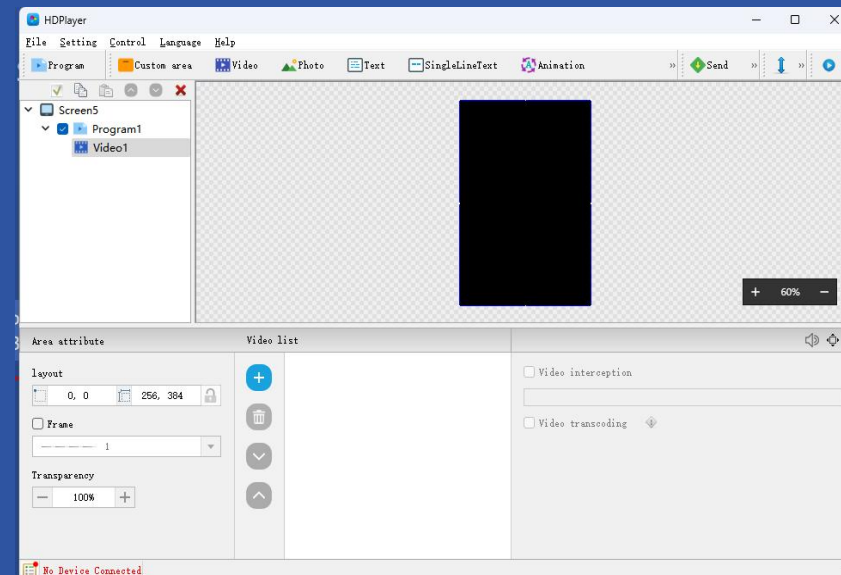
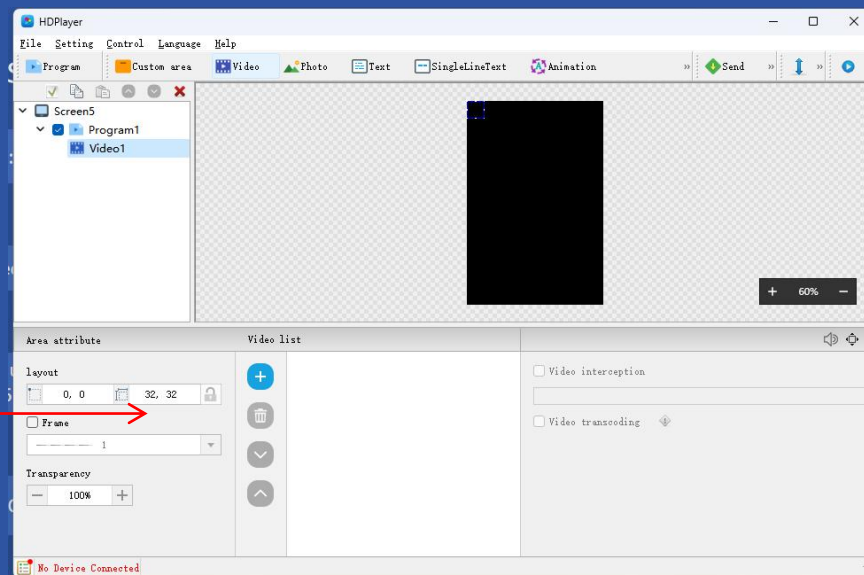
6.4.3: Select the types of videos, pictures and text you want to add

Click: "Video"



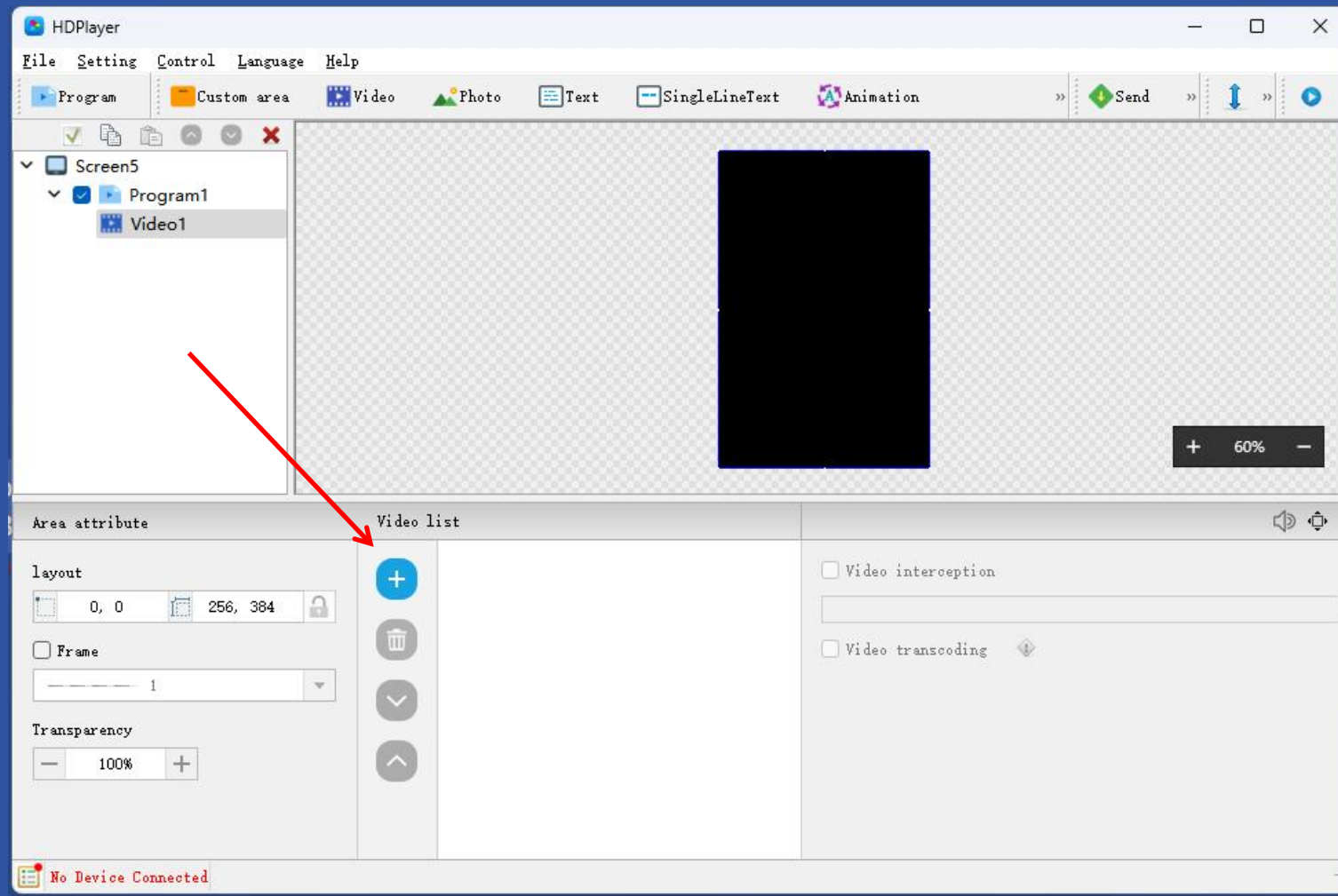
6.4.4: Set the playback window to full screen

The resolution is set to
256*384

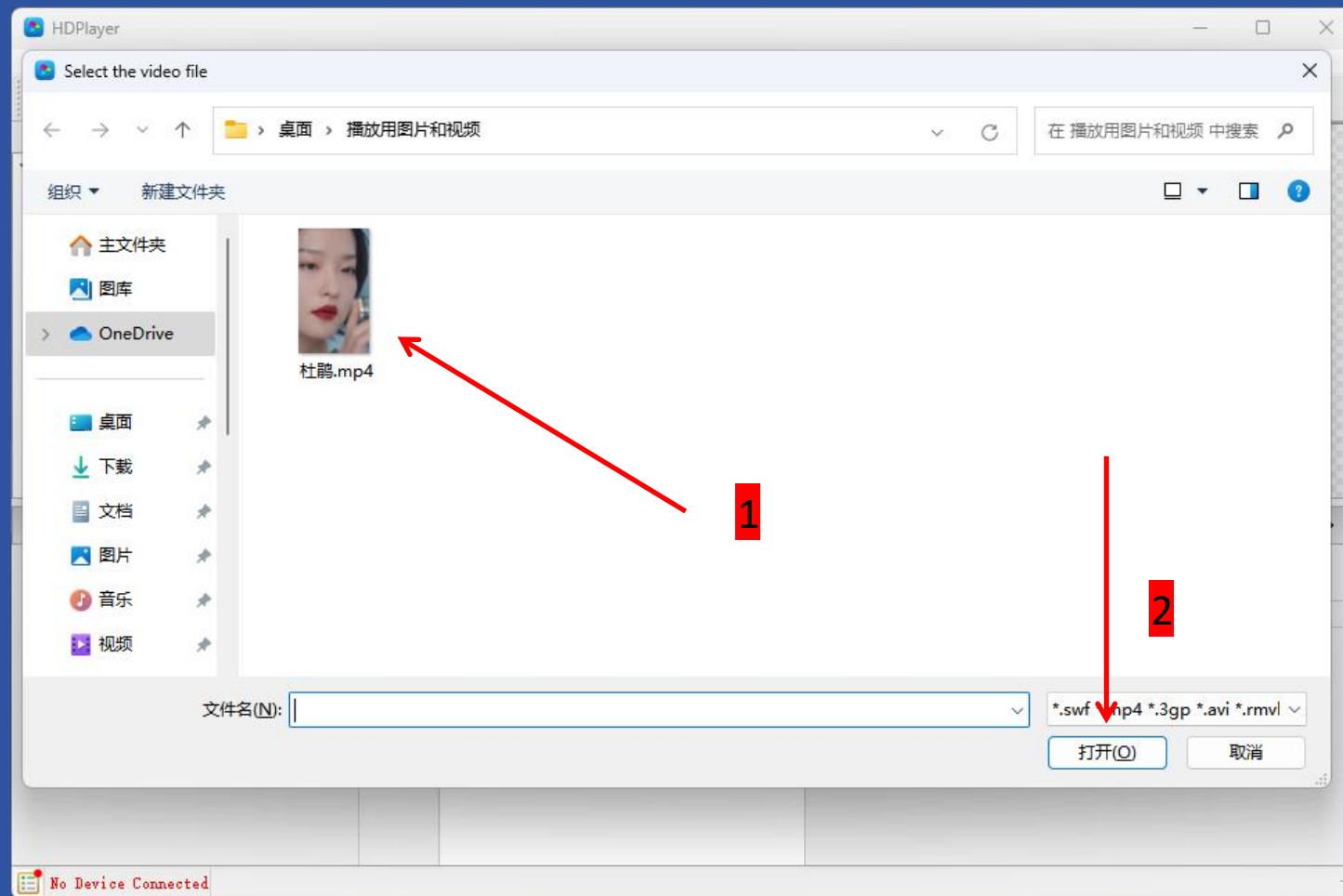


6.4.4.1: Import video

Click: “+”

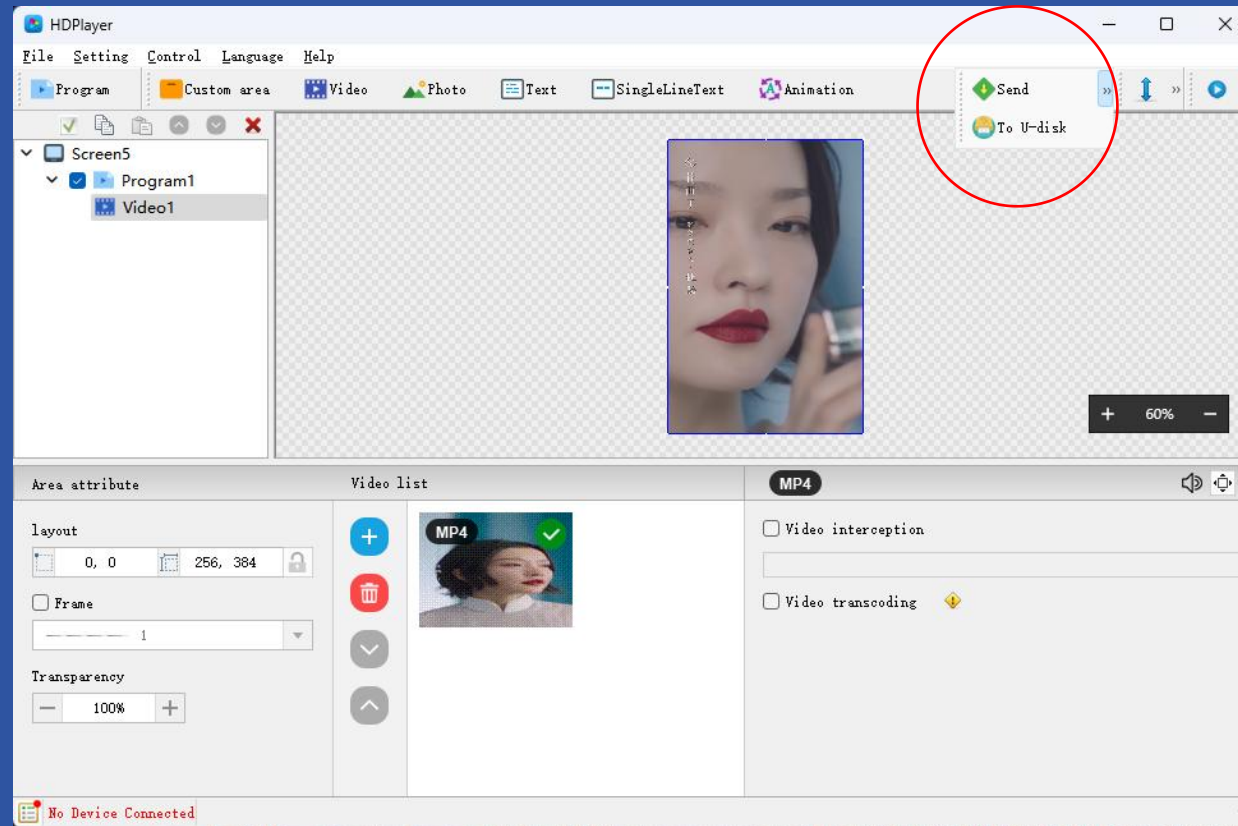


6.4.4.2: Select video

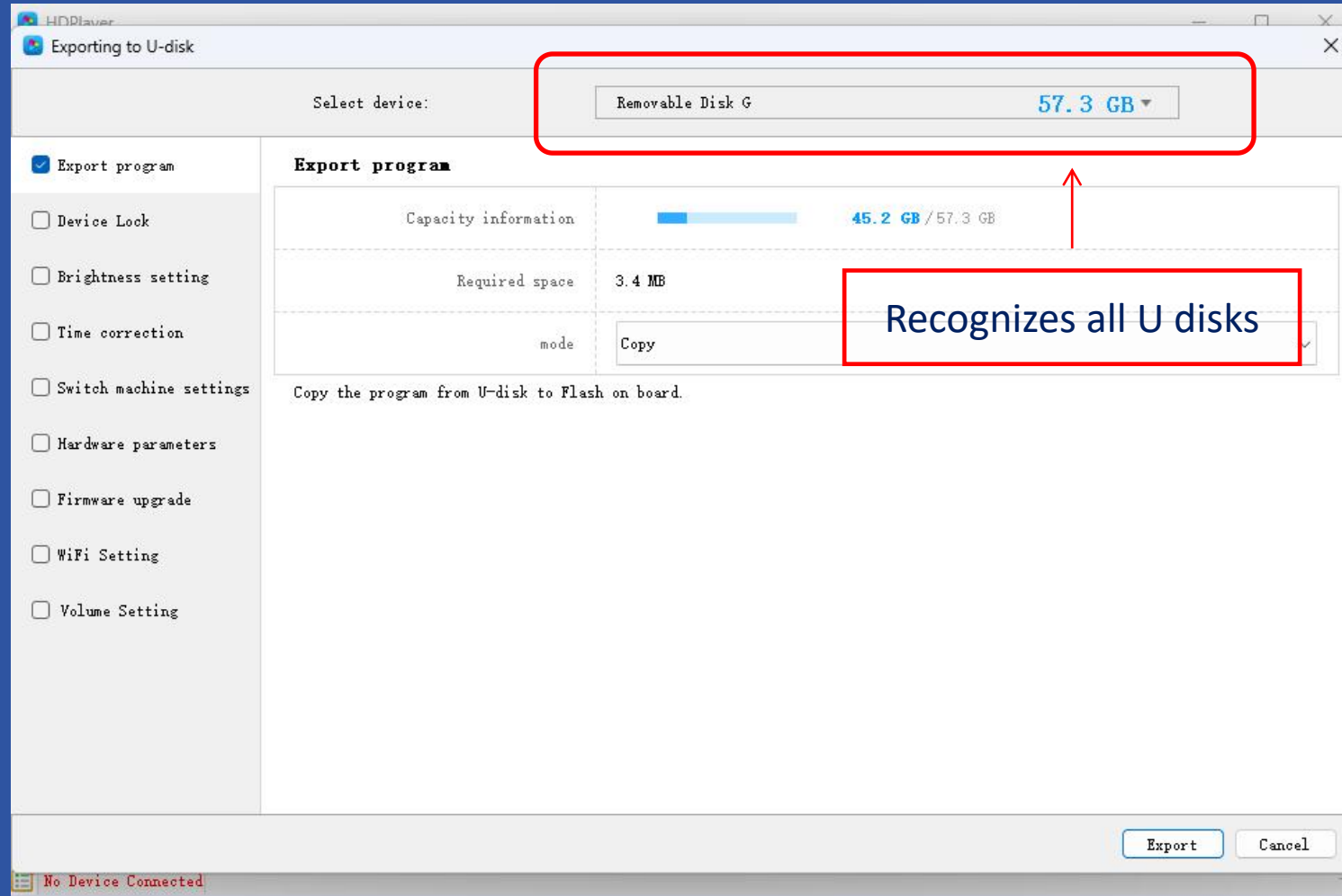


6.4.5: Send program to PEN flash drive/U-disk

Select: "To U-disk"



6.4.5: Send program to PEN flash drive/U-disk



Click: "Export"

6.4.6: Send program to PEN flash drive/U-disk

After the program is sent to the U disk, unplug the U disk, and then insert the U disk into the USB extension cable interface of the LED totem advertising machine to upload the program. When the LED display shows that the program has been updated, unplug the U disk. , at this point the program is updated

7. Since the resolution of the other display surface is different from the resolution of the previous display surface, you only need to set the resolution again. All subsequent steps are exactly the same to complete the program update of the other display surface.



Only Setting